

Crown area measurement by ArborSonic

Tree crown area measurement is possible by evaluation of a photo.

- software is available at:

<http://fakopp.com/en/product/arborsonic/>

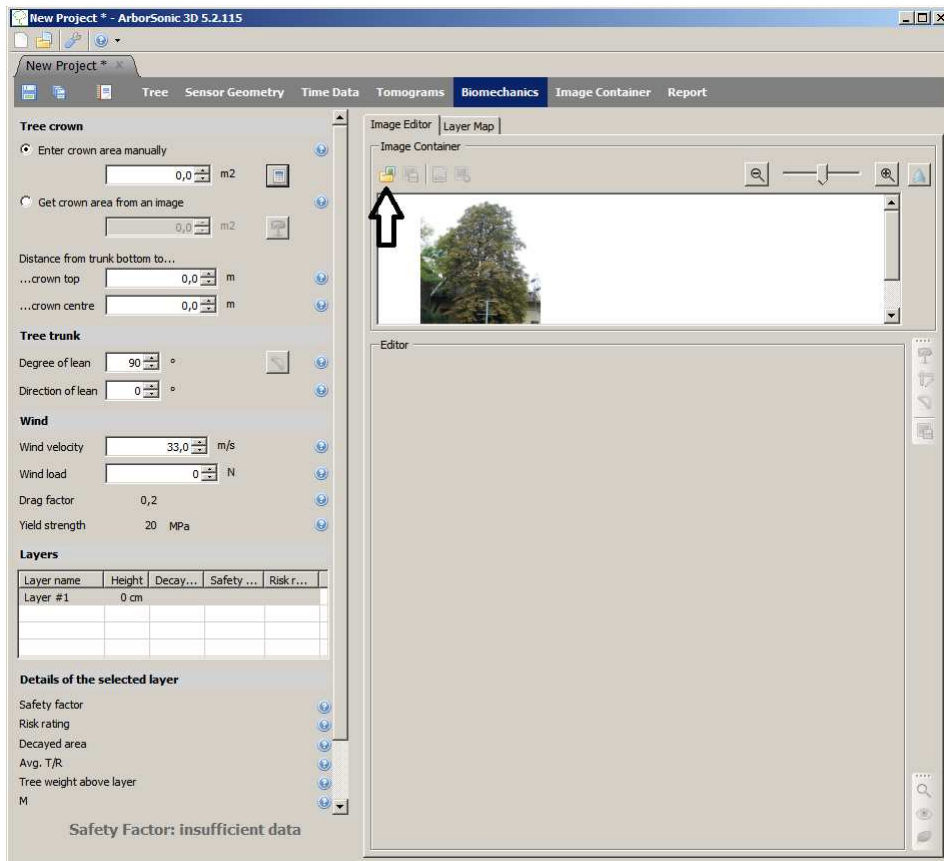
download: ArborSonic 3D 5 for Windows (version: 5.2.115, size: 9.2MB)

After installation run ArborSonic

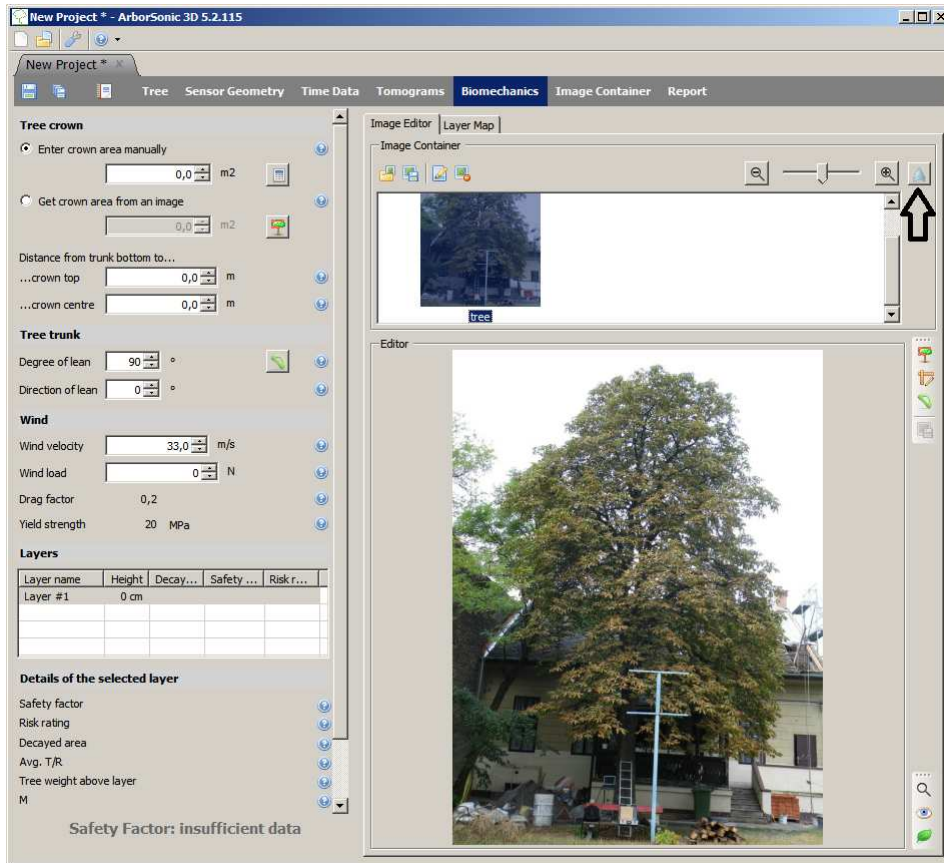
Software is free.

1.) go to **Biomechanics** tab

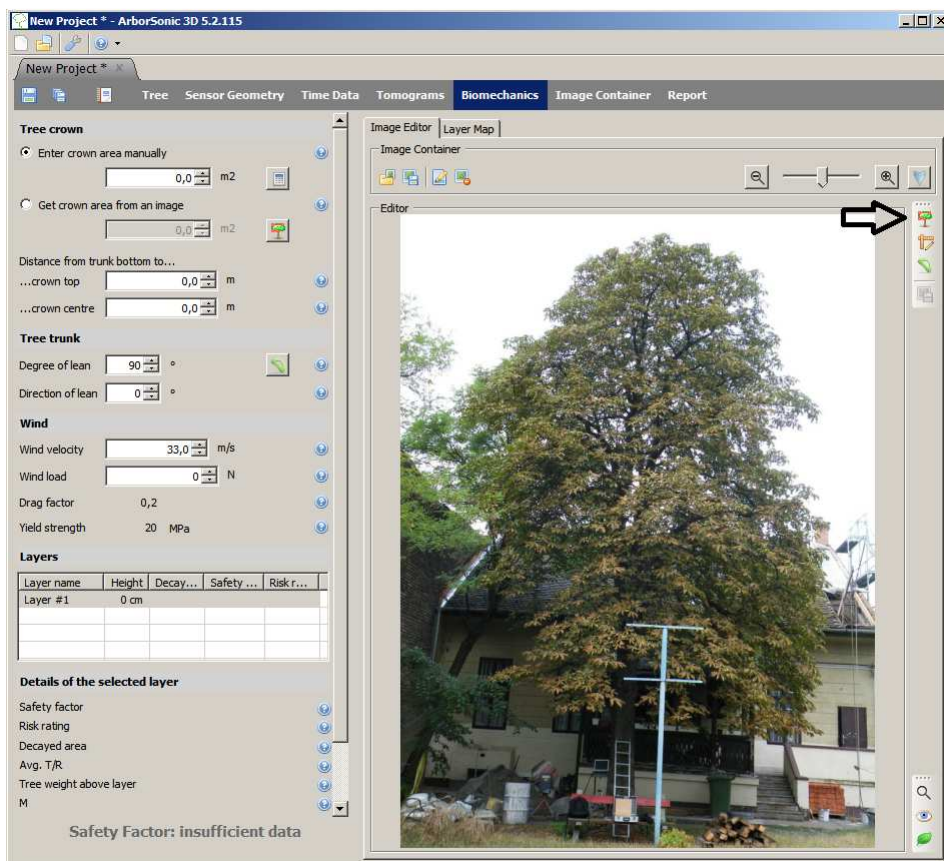
import image using icon marked by arrow



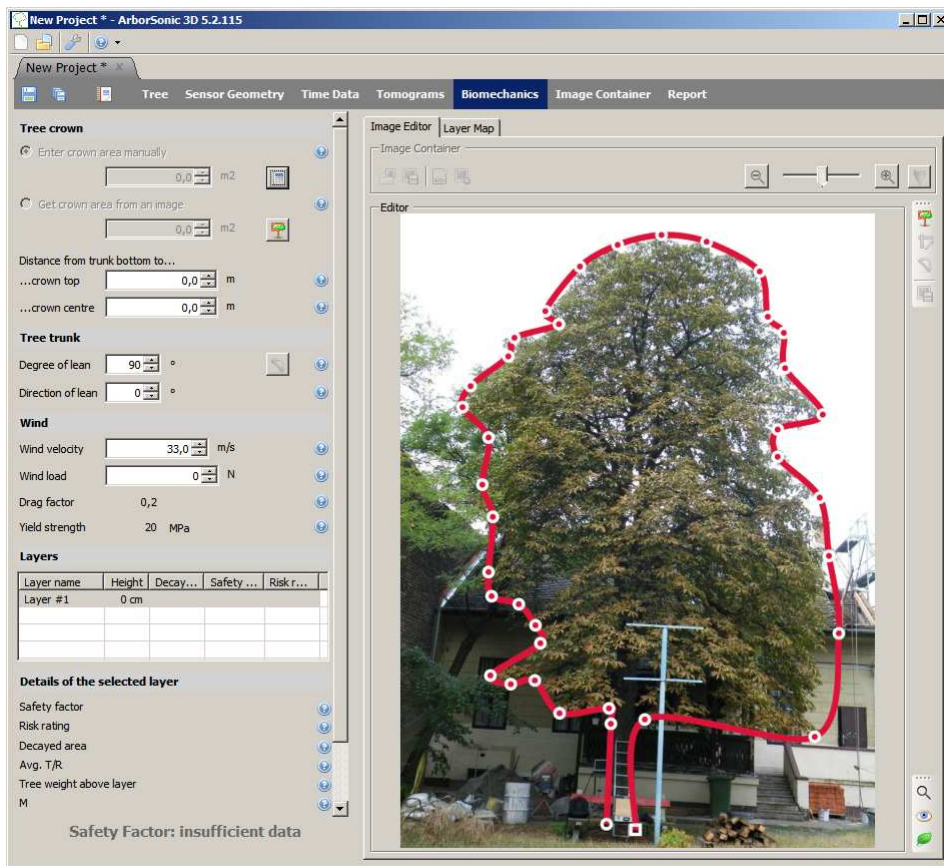
Click the small image to move it into „Editor” surface, then click the green arrow , marked by black arrow.



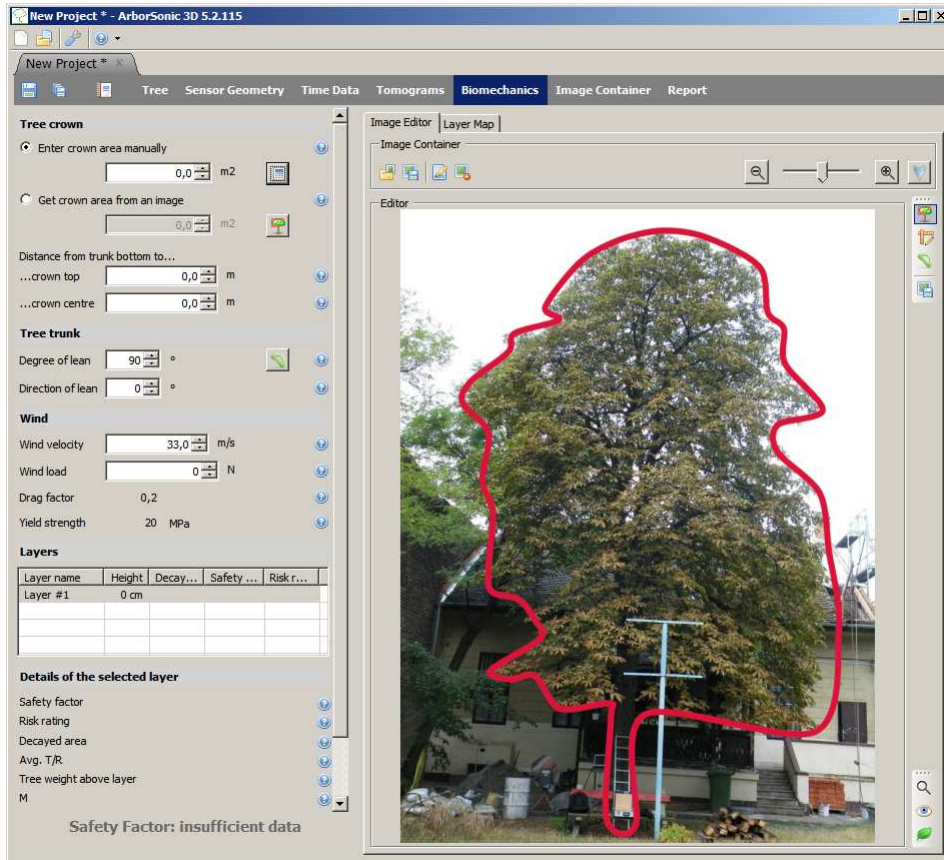
Activate the drawing function by icon marked by black arrow.



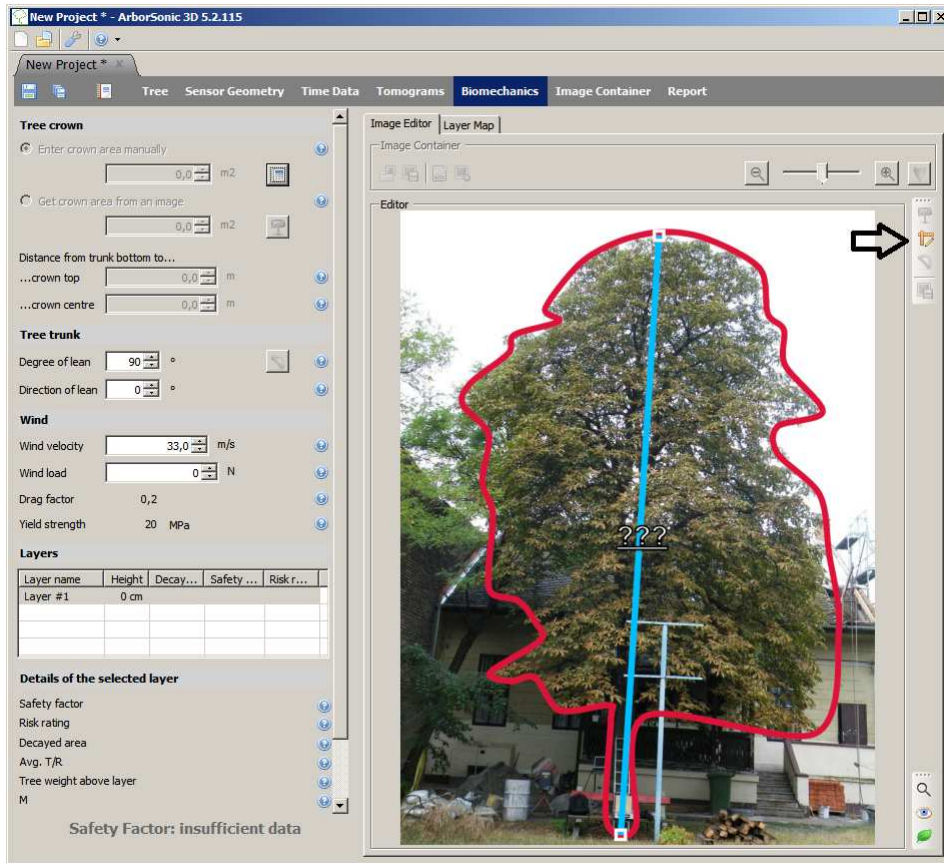
Marked the crown area including the tree trunk:



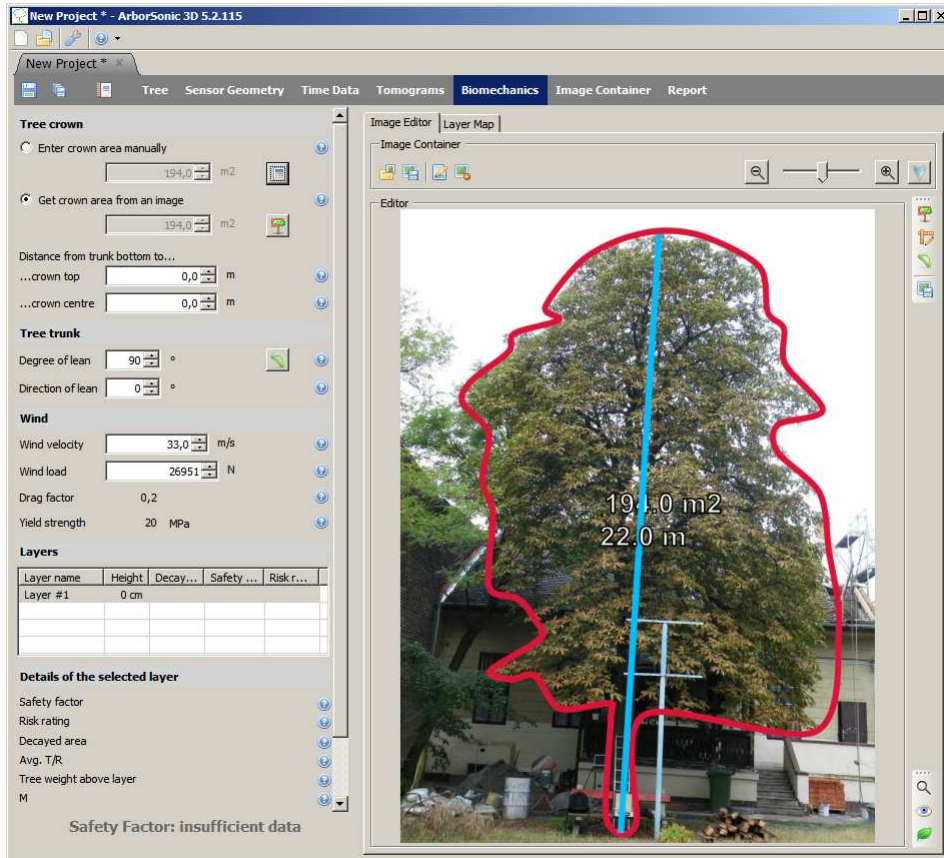
deactivate the drawing function by clicking the drawing icon again



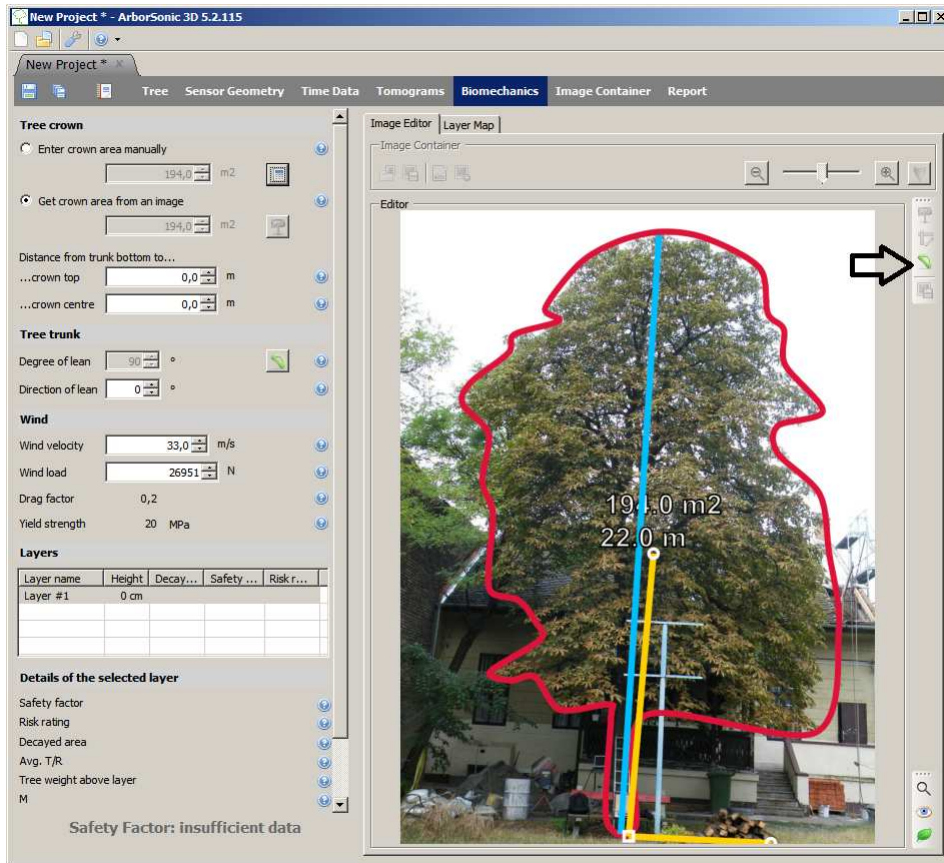
Activate the scaling icon, click the tree bottom and the tree top



Enter the tree height after clicking the „???” and click scaling icon again to deactivate the function



Activate the angle measurement by icon marked by black arrow. Click the tree bottom , than crown center and the horizontal point



Deactivate the angle icon you get the result: Crown area: 194 m², crown center height is 12,3 m

